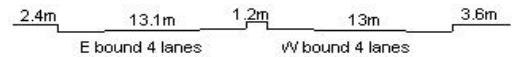
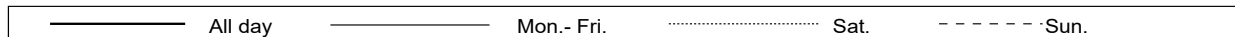
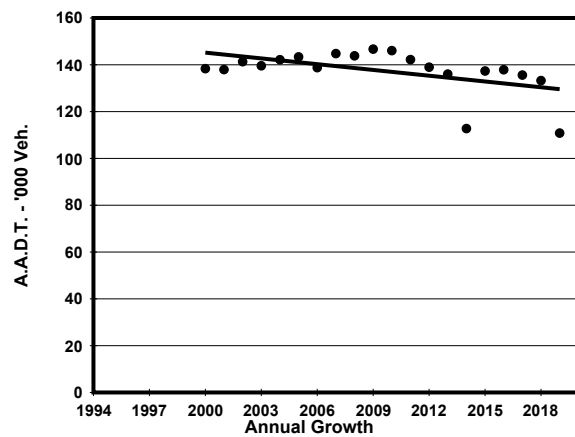
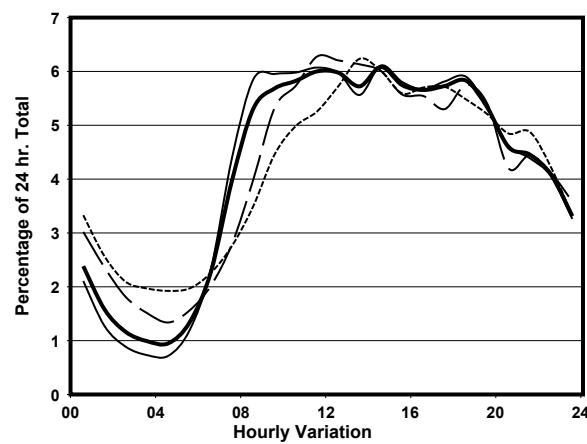
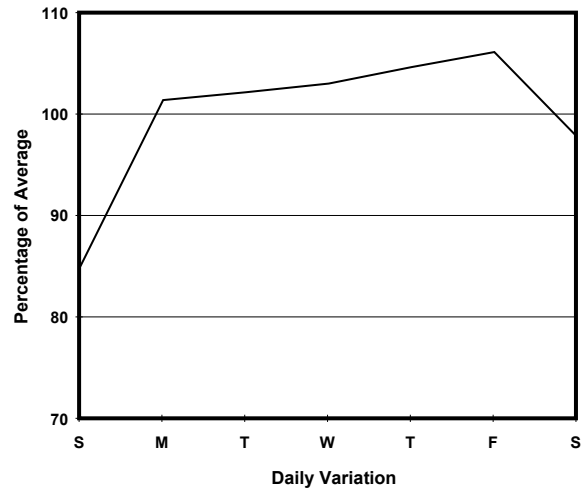
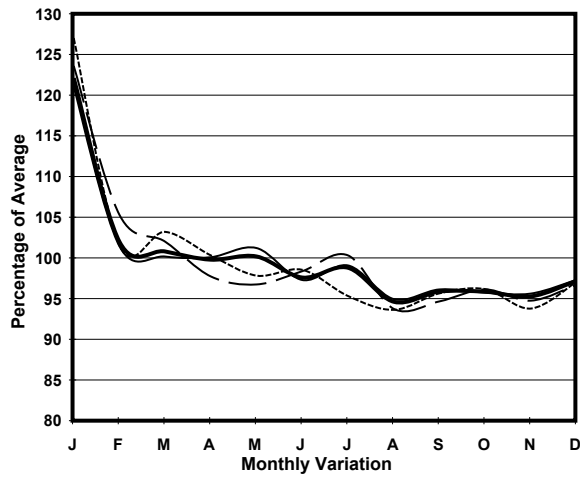


YEAR 2019
CORE STATION 1030
ROAD NETWORK MAJOR
ROAD TYPE URBAN TRUNK ROAD

LINK CONNAUGHT RD C & UNDERPASS (from PEDDER ST to COTTON TREE DRIVE)



1. TRAFFIC FLOW VARIATION AND GROWTH



2. TRAFFIC CHARACTERISTICS (BY DIRECTION)

| Parameter | All - Day | Mon. - Fri. | Sat. | Sun. |
|--------------------------------------|-----------|-------------|-----------|-----------|
| EAST BOUND | | | | |
| A.A.D.T. | 56450 | 57320 | 58160 | 53670 |
| R 12 / 24 - % | 65.9 | 67.8 | 63 | 58.8 |
| R 16 / 24 - % | 84.7 | 86.6 | 81.2 | 78.3 |
| AM Peak Hour | 0900-1000 | 0800-0900 | 0900-1000 | 0900-1000 |
| One-way flow at AM peak hour | 3160 | 3470 | 3090 | 2240 |
| T - % (AM) | - | - | - | - |
| PM Peak Hour | 1800-1900 | 1800-1900 | 1800-1900 | 1600-1700 |
| One-way flow at PM peak hour | 3080 | 3150 | 3230 | 3030 |
| T - % (PM) | - | - | - | - |
| Prop.of commercial vehicles - 16 hr. | - | - | - | - |
| WEST BOUND | | | | |
| A.A.D.T. | 54380 | 58330 | 50940 | 41220 |
| R 12 / 24 - % | 69.3 | 70.4 | 66.5 | 64.9 |
| R 16 / 24 - % | 87.4 | 88.4 | 84.6 | 83.6 |
| AM Peak Hour | 0900-1000 | 0900-1000 | 0900-1000 | 0900-1000 |
| One-way flow at AM peak hour | 3140 | 3490 | 2720 | 1990 |
| T - % (AM) | - | - | - | - |
| PM Peak Hour | 1800-1900 | 1800-1900 | 1800-1900 | 1800-1900 |
| One-way flow at PM peak hour | 3380 | 3670 | 3050 | 2460 |
| T - % (PM) | - | - | - | - |
| Prop.of commercial vehicles - 16 hr. | - | - | - | - |

3. OTHER INFORMATION AND COMMENT